
Chapter 4

DMI Tool

DMI Tool

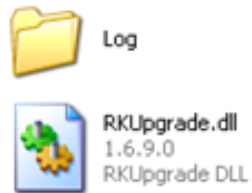
This chapter explains how to use the DMI tool to edit DMI information of tablet before starting, we need to do some preparative actions below..

NOTE: Before starting, be sure to follow these steps:

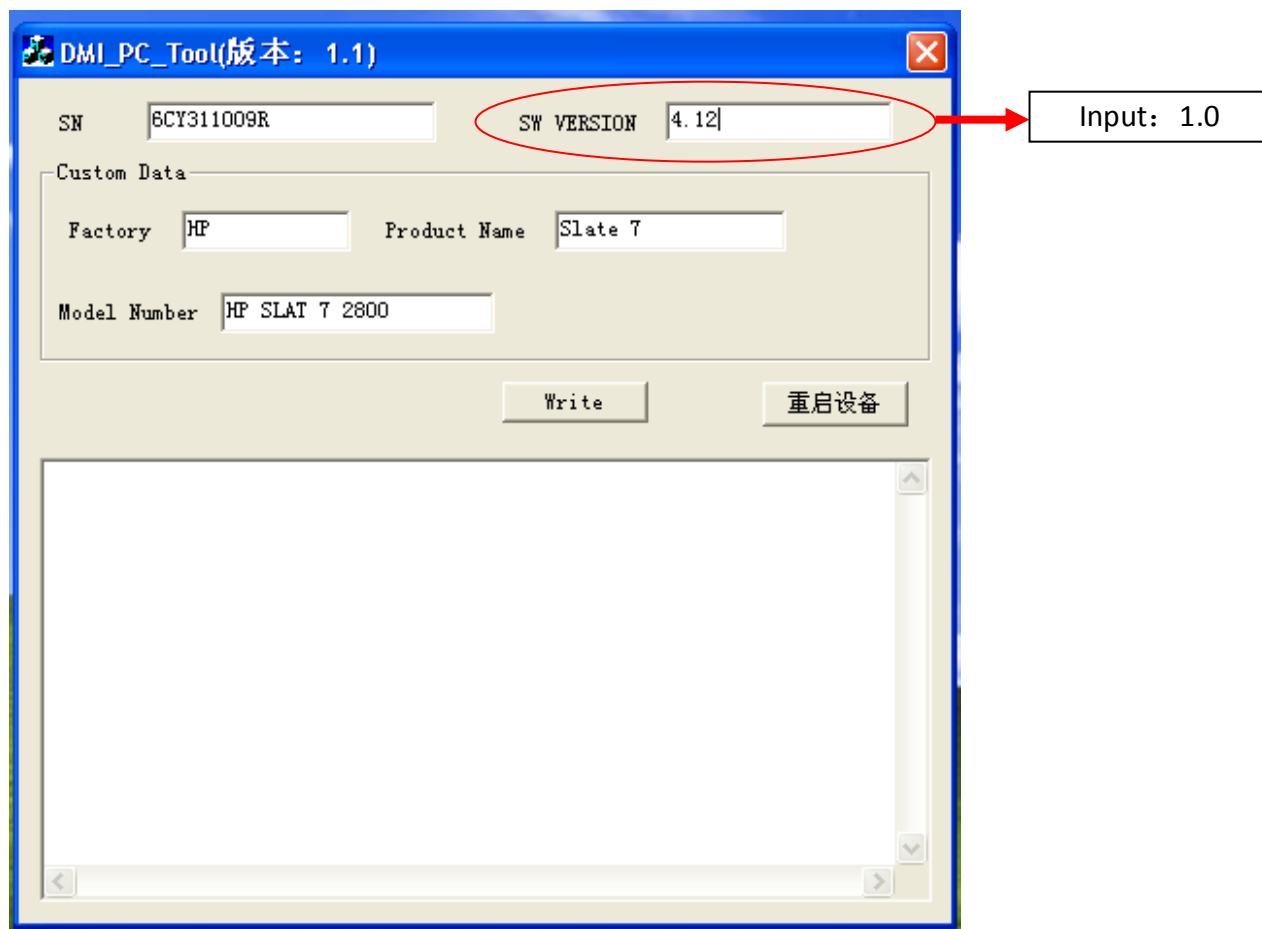
1. Remove all external devices.
2. Make sure all the devices used for edit bellow are ok.
 - One PC .
 - One USB cord

4.1 Execute the DMI Tool

1. Download the source file “**DMI Tool.zip**” into your PC, extract the zip file and refer to following figure show.



2. Execute the **DMI_PC_Tool** to open the following window



3. Input correct information in, and input **1.0** into **SW VERSION**.

4. Connect the tablet by USB cord to the PC, then press “**volume+**” button and “**power button**” for 4 seconds at least to turn the tablet to burnable mode, you can check is the tablet founded with burnable mode by following icon.



5. Make sure the contents are correct and the tablet is on burnable mode, then click Write to burn DMI information into ROM including following items:

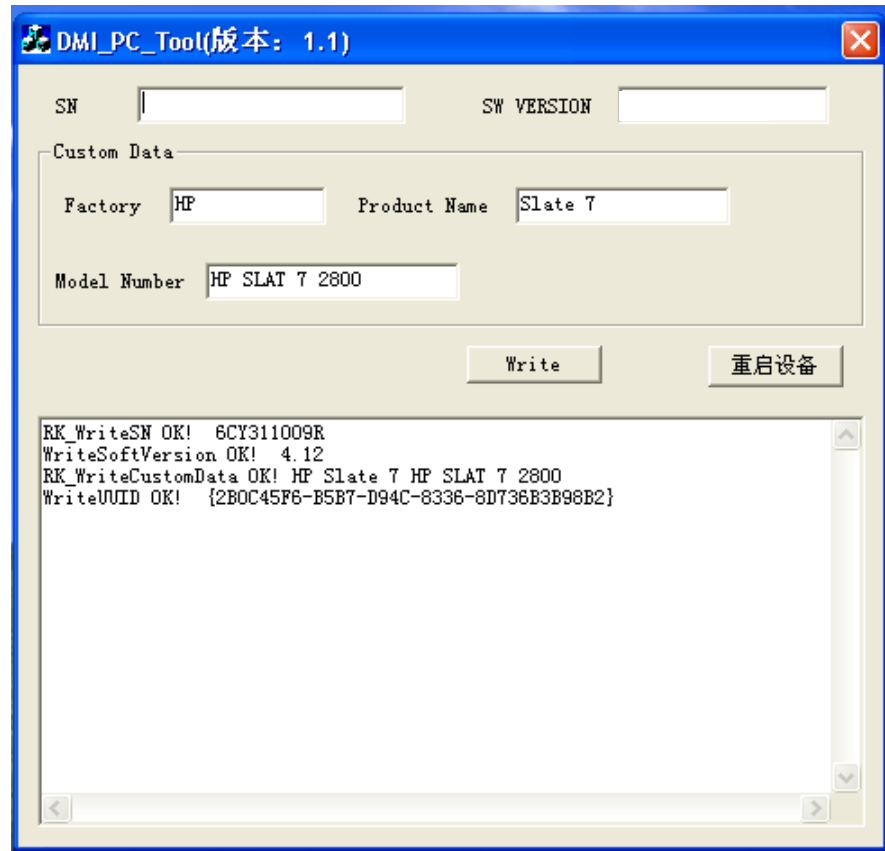
Note: there are 2 conditions should be followed when edit the SN:

1. "6CY" means "China BYD", It cannot be changed.
2. Only 10 digits can be wrote in.

- Serials Number
- Model name
- UUID

6. the process contents will be shown in following window, please refer to following figure.

Note: Keep battery with enough power, Don't stop it forcedly when it on going.



7. If the writing is ok, please disconnect the tablet from PC, and reboot DMI tool to continue.
8. Power on tablet to check if the SN is correct or not.